



R_w 33 ÷ 41 dB



system consistency
with GSW Office

Timber Slim / Plus door

System description

Guarantee of high acoustic insulation parameters and full privacy provided by non-transparent doors.

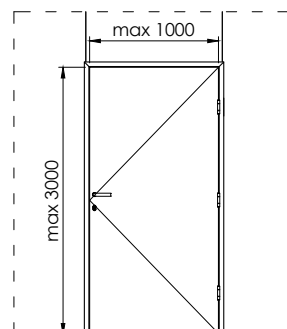
- ✓ a solid or glazed wooden door leaf in the aluminum frame of the GSW Office door frame of any type
 - in all-glass single- and double-glazed walls
 - and in the traditional concrete wall,
- ✓ high acoustic insulation parameters - R_w reaching even up to 41 dB, through special acoustic inserts,
- ✓ possibility to choose between two types of hinge used in the door - visible or hidden in the frame,
- ✓ the traditional elegance of wood perfectly fits both glass walls and other interior design elements,
- ✓ unlimited aesthetic possibilities - door may be covered with veneer, laminate or varnish.



Timber Slim / Plus door

Specification

Durability*	Class 6 (200 000 cycles)
Type of filling	full / glazed
Max height (mm)	3000
Max width (mm)	1000
Acoustic insulation	R_w 35 ÷ 39 dB; 34 ÷ 38 dB
Fire resistance	-
Materials / finish	Veneer / Laminate / Varnish

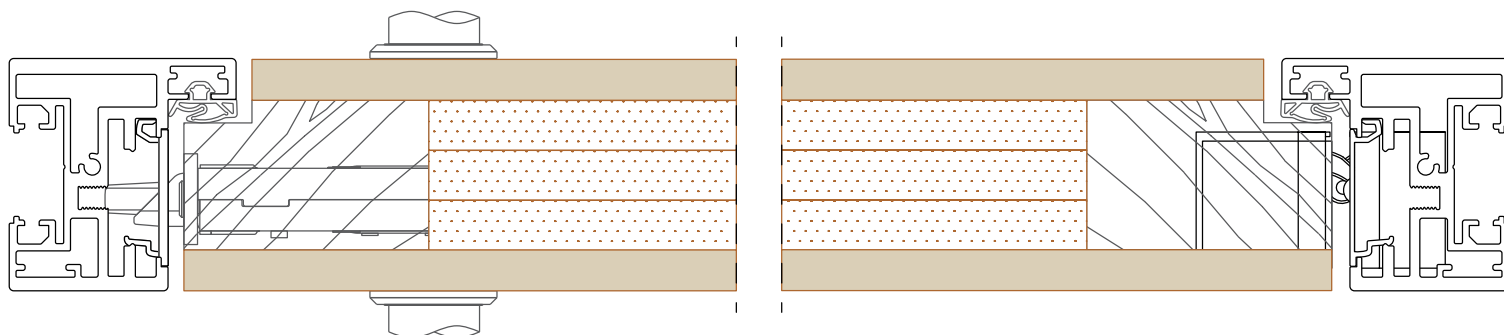


* According to EN 1935:2002 / AC:2003 / C1:2007

Acoustic insulation

Type of filling	R_w [dB]	C [dB]	R_{A1} [dB]	$R_{A1,R}$ [dB]
Glazed 37 mm, VSG 44.1	33	-1	32	30
Glazed 37 mm, VSG 55.2 Si*	37	-1	36	34
Full 51 mm, Sauerland 33 VL	38	-1	37	35
Full 51 mm, Sauerland 39S3R	41	-1	40	38

*Si - Saint-Gobain Glass Stadip Silence



Glass System Polska S.A.

Marcina Kasprzaka 4,
01-211 Warsaw
Poland



NIP 521-363-87-46
REGON 146350965
KRS 0000912550



tel.: +48 22 243 24 20
+48 22 243 24 22



e-mail: office@glasssystem.com



www.glasssystem.com